

Certificate SGSCH-COC-030031

The Organization

The below listed subsidiaries of  
**Mulder-Verweg Holding B.V.**  
**- Mulder Verweg B.V.**  
**- Obimex B.V.**

Twentepoort West 39  
7609 RD Almelo, The Netherlands



has been assessed and certified as meeting the requirements of

## FSC® Chain-of-Custody

The company was assessed against the following standards:  
FSC-STD-40-003 V2-1 Chain of Custody Certification of Multiple Sites – November 2014  
FSC-STD-40-004 Version 3.0 FSC Standard for Chain of Custody Certification – April 2017  
FSC-STD-50-001 Requirements for use of the FSC trademarks by Certificate Holders

for the products detailed in the scope below

This certificate is valid from 30 July 2019 until 29 July 2024  
and remains valid subject to satisfactory surveillance audits.

Re-certification audit due 60 days prior to expiry date.

Issue 4. Certified since July 2014.

SGS Ref # NL14/818843112

This is multi site scheme.

Additional site details are listed on the subsequent page.

Authorised by

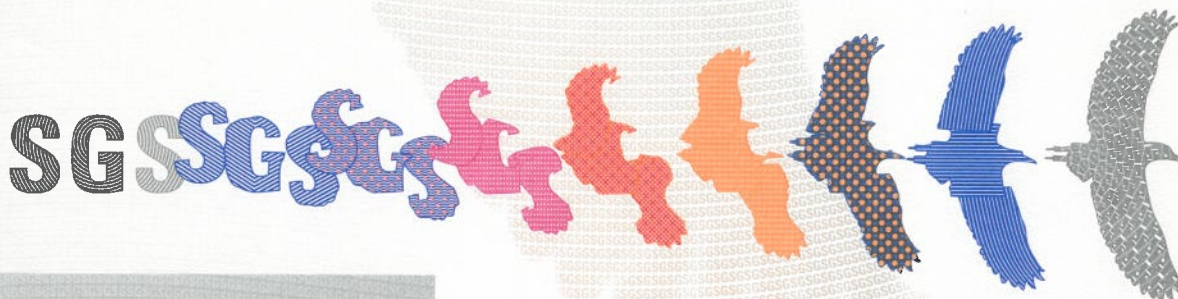
SGS Société Générale de Surveillance SA  
1, place des Alpes, 1211 Geneva, Switzerland  
t +41 (0)22 739-91-11 f +41 (0)22 739-98-86 www.sgs.com



The mark of  
responsible forestry

The validity of this certificate shall be verified on <http://info.fsc.org/>  
For the full list of product groups covered by the certificate see <http://info.fsc.org/>  
This certificate itself does not constitute evidence that a particular product supplied by the certificate holder is FSC-certified (or FSC Controlled Wood).  
Products offered, shipped or sold by the certificate holder can only be considered covered by the scope of this certificate when the required FSC claim  
is clearly stated on sales and delivery documents. This certificate remains the property of SGS  
The certificate and all copies or reproductions shall be returned or destroyed if requested by SGS.

Page 1 of 2





The below listed subsidiaries of  
**Mulder-Verweg Holding B.V.**  
**- Mulder Verweg B.V.**  
**- Obimex B.V.**



## FSC® Chain-of-Custody

Issue 4

Detailed scope

### Mulder-Verweg B.V.

**Purchase of wood, board material, doors and door frames, windows and window frames (FSC 100%, FSC Mix), assembly and sales of wood, board material, doors and door frames, windows and windowframes (FSC 100%, FSC Mix) using the transfer system.**

**Inkoop van hout, plaatmateriaal, deuren en deurkozijnen, ramen en raamkozijnen (FSC100%, FSC Mix), montage en verkoop van hout, plaatmateriaal, deuren en deurkozijnen, ramen en raamkozijnen (FSC100%, FSC Mix) volgens het transfer systeem.**

### Obimex B.V.

**Purchase and sale of wood, board material, doors and door frames, windows and window frames (FSC 100%, FSC Mix) using the transfer system.**

**In- en verkoop van hout en plaatmateriaal, deuren en deurkozijnen, ramen en raamkozijnen (FSC 100%, FSC Mix) volgens het transfersysteem.**

The covered products and processes are performed by the network of sites, and not necessarily by each of them.

Additional facilities

**Mulder Verweg B.V., Twentepoort West 39, 7609 RD Almelo, The Netherlands**  
**Obimex B.V., Twentepoort West 39, 7609 RD Almelo, The Netherlands**



The mark of  
responsible forestry